

# OATEN HILL & SOUTH CANTERBURY ASSOCIATION



AUTUMN NEWSLETTER

SEPTEMBER 2019

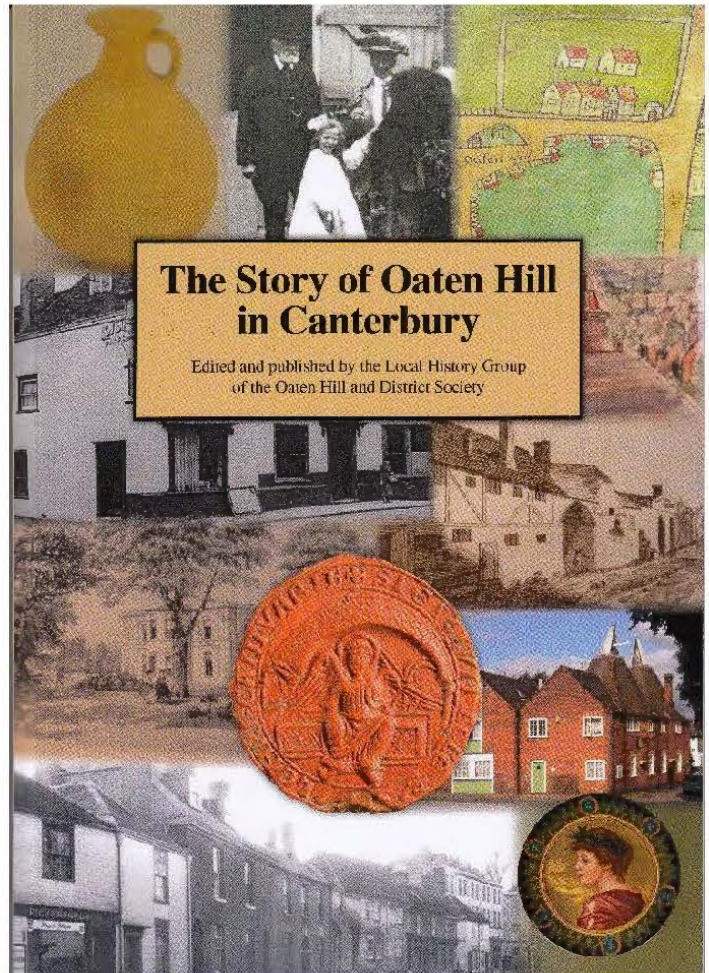
No. 12

## OHSCA HONOURED!

We are very pleased to announce recent honours reflecting the work and activities of the Association:



Sophie Scott, pictured here at the recent KCC/OHSCA tree-planting in Ersham Rd, has been honoured by KCC for her tree-planting exploits (page 4). Milton Road garden has been declared “outstanding” (page 2). And the Local History Group has also been honoured – winning the Hayes Award for *The Story of Oaten Hill* (page 3). Many congratulations all round!



### Contents

Dates	p.1
From the Chair	p.2
Membership	p.2
Green Team	p.2
Healthcare news	p.2
Social events	p.3

Local History Group	p.3
Planning Group	p.3
Sophie Scott honoured	p.4
AGM Agenda	pp.5, 8
Nomination Form	p.6
AGM minutes	pp.7–8
Committee and contacts	p.8

### OHSCA dates for your diary

every Wed & Fri:	weekly walking groups
30 <sup>th</sup> September:	photo competition closing date (p.3)
5 <sup>th</sup> October:	litterpick (p.2)
10 <sup>th</sup> October:	drop-in Old City Bar, Oaten Hill, 3pm
13 <sup>th</sup> October:	Gardeners' Question Time (p.3)
18 <sup>th</sup> October:	OHSCA Annual General Meeting (pp.5–8)
12 <sup>th</sup> November:	Local History Group (p.3)
6 <sup>th</sup> March 2020:	OHSCA Spring Event (tbc)



... there is still just time for your wildlife pictures ...

## FROM THE CHAIR

### Help Needed!

As we approach the AGM, with the nomination paper for committee elections to be found on page 6 of this Newsletter, we are redoubling our search for new blood!

Currently we have no nomination for Treasurer – so this task will fall to an existing committee member if no volunteer is found. If you are interested but not confident you can manage the task – fear not. Our outgoing Treasurer will be happy to explain the system, and show how to manage it simply.

We will be launching at the AGM our Open Spaces Strategy – inviting debate and requesting your input on its aims.

Our committee structure has been simplified over the year, and we are now moving to holding only six committee meetings a year, leaving the subcommittees, special interest groups (SIGs) and participants to run themselves as they see fit. The task of the Committee is therefore to facilitate and support the special interest and sub-groups, to debate wider or new issues affecting our area, and consider the need for new initiatives.

Current SIGs/subcommittees and delegates:

- Green Team – trees, gardens, litter
- Social Events and Activities (SEA – which includes the Gardening Interest Group)
- Local History
- Planning
- Health Care
- Participation in CCC Higher and Further Education Review
- Participation via ACRA in various Clean Air, Eco, and Transport Forums

With the aim of encouraging members to get involved, either in existing groups or by starting new ones, members with email should have received recently a survey to ask what their needs and interests are – if we can more closely match these, we hope it will encourage greater participation.

So to remind you of areas where the Association needs assistance, could you help us with any of the following?

- Organising or helping run events
- Investigating and commenting on planning applications
- Investigating and commenting on licensing applications
- Information technology
- Production of the quarterly newsletter
- Distribution of the newsletter e.g. delivery
- Treasurer
- Committee work
- Recommending OHSCA to a friend or neighbour
- Other (please specify)

Potential volunteers should first contact the *Hon. Sec.*

*Tim Carlyle / David Kemsley – Vice Chairs*

## MEMBERSHIP

We have 293 households who are paid up members but we also have 25 households who have not yet renewed their membership. Please check the back of your paper newsletter – we really do need you to send in your sub of £5 right now if you have not yet paid. If you have any query, please email me on [sophie01@btinternet.com](mailto:sophie01@btinternet.com) or ring on 456285. We really need all our members!

*Sophie Scott*

## GREEN TEAM

Another scorching summer – and our flower beds and planters have come through amazingly well, thanks to help from our members, to whom serious thanks are due. We had a very enjoyable visit from South & South East in Bloom in June. This really concentrates our minds so we make sure the gardens are as good as we can manage and is also an excellent source of advice. This year the awards were:

Milton Road – *Outstanding*  
St George's Garden – *Thriving*  
Fire Station – *Thriving*

Huge thanks are due to all involved but especially to Alison for the plants and to Dave Goddard and Deirdre Hawkes for their unfailing, year-round immense support and hard work. The judge commented that what has been achieved must have needed a very high degree of volunteer input and I'd agree with him.

We are looking forward to some work on the Fire Station beds in November when students from Canterbury College, part of the EKC group, are going to repair and restore the planters – do look out for this. We intend to replace some earth as well as plants – so please get in touch with me if you'd like to be involved.

**Crocus plant.** We are going to plant 1000 crocuses on the green outside the Travelodge between Ivy Lane and the cinema roundabout on Wed. 2<sup>nd</sup> October, starting at 2 pm. Please do come and help – and bring a trowel!

**Litterpick Saturday 5<sup>th</sup> October.** We will be concentrating on the New Dover Road. Meet at the junction with Ersham Road, 10 am. Sacks, gloves, hi-vis etc will be provided but do wear suitable shoes.

**Trees.** We are planting at least two trees this winter, a Turkish hazel in Rhodaus Town and a silver birch off Cromwell Road. If funds permit, we hope to add another. Climate change is definitely happening and one thing we can do is to plant more green trees to cool and clean the air where we live.

*Sophie Scott*

## OHSCA HEALTHCARE UPDATE

The OHSCA emergency healthcare leaflet can still be downloaded from:

<http://www.ohsca.org/pdfs/emergency.pdf>

In addition, note two NHS online facilities:

<http://kent.healthhelpnow.nhs.uk/>

<https://www.nhs.uk/apps-library/health-help-now/>

With respect to Mental Health, this link may be useful:

<https://www.kmpt.nhs.uk/need-help/>

© The texts of this Newsletter copyright OHSCA and named contributors; not to be reproduced without request and attribution.

## SOCIAL EVENTS AND ACTIVITIES (SEA)

We continue to organise a range of activities and events which we hope bring the community together. Our thanks go to all those who made them possible. Do contact [social@ohsca.org](mailto:social@ohsca.org) if you have any ideas for future events / activities or are willing to help in anyway. In addition to our ongoing activities, we have held two events recently:

**Garden and Yard sale.** With 12 participating venues this new event was widely enjoyed. Much de-cluttering and recycling took place. Our appreciation to Lorna Durrani for organising this so efficiently.

**Lunch on the lawn.** Aided by good weather and our live saxophonist, this was again a most enjoyable event with a variety of interesting and tasty dishes brought to share. Many thanks were offered to hosts Francis Green and Alison Culverwell, and the team of helpers without whom the gazebos would not have been erected.

Two coming events:

**Photo competition.** You are invited to submit up to 2 photos on the topic Canterbury "flora and fauna" (which includes pets) to [social@ohsca.org](mailto:social@ohsca.org). As before there will be 2 categories – one for those under 16 years and one for those above. Prizes will be presented at the AGM. Closing date 30<sup>th</sup> September.

**Gardeners' Question Time** and produce/seed share. Sunday 13<sup>th</sup> October at the Multiple Sclerosis Therapy Centre (by Rugby Ground, off Nackington Rd.) 3pm. NB. There will be no separate Produce Share this year.

## Gardening Interest Group (GIG).

During the early summer, there were two GIG visits. The first was to Godinton Gardens to see the delphiniums and borders, the second was to Old Bladbean Stud, which had masses of lovely roses.

Later in the summer, there were visits to two gardens in Ash, one belonging to the Head Gardener of the Cathedral Gardens, the other to the Head Gardener of the Salutation Garden in Sandwich. Both were smallish but intensely planted with exotic and tropical plants.

If you would like to become a member of this Group, please contact Alison or Sarah.

*Sarah Perkins* ([sarah@perkinsnet.plus.com](mailto:sarah@perkinsnet.plus.com))  
*Alison Culverwell*

## LOCAL HISTORY GROUP

We are very pleased to be able to announce special recognition for the work of the Local History Group:

**The Hayes Award 2019.** The Hayes Award is an annual award for the best work on Canterbury relating to history or archaeology. The award committee comprises representatives from the University of Kent and Canterbury Christchurch University. The award for 2019, together with a prize of £200.00, has been given to the OHSCA Local History Group for our latest book *The Story of Oaten Hill*.

The award was presented at a ceremony on 3<sup>rd</sup> September, by the Lord Mayor of Canterbury, Councillor Terry Westgate, to the editorial team lead by Dr David Potter. The other members of the team are Susi Brain, Elizabeth Dorling, Carolyn Edrich, Derek Ray, Sophie

Scott and Michael Steed. The large format, colour illustrated book is available price £10 together with our other publications at the OHSCA website [www.ohsca.org/history.html](http://www.ohsca.org/history.html), or by telephoning 01227 472 932.

The Local History Group meets at the Kent and Canterbury Club at 10.15 am every second Tuesday on alternate months. Next meetings 12<sup>th</sup> November 2019 and 14<sup>th</sup> January 2020. New members are welcome.

*Mike Brain*, September 2019

## PLANNING GROUP REPORT

**Canterbury City Council Community Infrastructure Levy Consultations (CIL).** A complicated story. We submitted arguments to CCC about the proposed CIL levels – a new tax being introduced by all local authorities at the suggestion of HMG to raise money, mainly on property development. It will supplement Section 106 monies, and is intended to replace central government funding. So, as always, it is not new money, just a replacement for either raising business rates, or even further reductions in government grant – which are still going ahead despite election promises. Our basic aim is to get CCC to reveal the basis of their (generally developer-friendly) calculations of payments due.

**Mountfield Park.** The Supreme Court has refused leave to appeal on points of law, so it seems the legal remedies are exhausted, although we must wait to be advised by the actual applicants, following which CCC will almost certainly restart the final approval process. There may be a fundraising campaign to cover costs – in which case your contributions will be called for!

**Success! – Student Accommodation, Cossington Rd.** This has been refused at Appeal because of overwhelming massing, and unsightly design of the rear flat roof areas – even though the Inspector thought the proposed use and front elevation were OK!

**68 Old Dover Rd.** New drawings. We maintained our strong objection despite new elevations.

**40 New Dover Road** (84 rooms) and **White Lodge Abbots Barton Walk** (89 rooms). We objected strongly to both of these on generally similar grounds – massive over-development and breach of the CCC guidelines for residential area infill, and the New Dover Road design guide, which both call for new development to have the same overall scale as the existing context, including provision of adequate space between buildings, and preservation of landscape trees and planting. In the case of New Dover Road, three storey blocks of massive scale and poor appearance approach to within 5m of existing buildings, and every tree on site is removed. For White Lodge, the wreckage of planting is less, but the elevations are still of inappropriate design, and both have zero amenity or recreational space.

**Other applications.** Various commented on, in particular 12 New Dover Road – where we intend to lodge with the neighbours an enforcement request as it appears the size of the new extension is greater than the approved drawings.

**St Mary Bredin Appeal.** This has been delayed.

*Tim Carlyle*, 13<sup>th</sup> September 2019

## SOPHIE SCOTT HONOURED



On Thursday 11<sup>th</sup> July, Kent County Council's Deputy Cabinet Member for Planning, Highways, Transportation and Waste, Michael Payne, accompanied Sophie Scott in planting a small-leaved lime tree [<https://www.treezilla.org/treezilla/features/841124/>]. The tree is dedicated to Sophie in recognition of her long advocacy for a cleaner, greener and healthier Kent.

The choice of small-leaved lime is a poignant one for Kent. Pollen profiles indicate it was once our commonest tree, but it is now rare and confined to a handful of relic fragments of ancient woodland. Its sweetly perfumed blossom would once have seen our woods pulsate with bees and other pollinators, while its delicate heart shaped leaves danced in the slightest breeze.

Sadly, clearance of the Kentish wildwood, exacerbated by the vulnerability of the tree's foliage to grazing by livestock and foresters' favouring of more commercially lucrative tree species when undertaking woodland management, has seen small-leaved lime (and its wildlife) become rare in Kent. It is fitting then, that the county council is now working to restore a tree species people have so effectively removed from our landscape.

Sophie Scott has been actively involved in urban tree planting around Canterbury since 1997. She joined the Oaten Hill & District Society (OHDS) in 2006. OHDS subsequently merged with the South Canterbury Residents Association to form the Oaten Hill & South Canterbury Association (OHSCA). In the last 22 years, Sophie has supported and planted some 72 urban trees.

In 2010, KCC trialled a scheme whereby communities could pay for a tree to be planted by contractors and maintained by Kent Highways. Sophie responded to the call and mobilised residents house-to-house in order to raise funds. She has been doing the same thing ever since. Sophie said: –

*"We were the guinea pigs! We asked for donations and were delighted to find that many people agreed."*

*Kent Highways' scheme has been so popular – not a bad effort for a residents' association!"*

Overall the South East retains 15.6% woodland cover (the national average is lower than 10%) and Kent still has more ancient woodland than any other British county, but the pressure on this woodland is intense and recognition of the wider 'environmental services' benefits of woodland as our "natural capital" is key to expanding Kent's tree and woodland cover.

The Committee on Climate Change has recommended that three billion new trees are planted by 2050 to mitigate the UK's contribution to global greenhouse gas emissions. Essential as this is, trees are also vital for wildlife, help reduce flood risk, replenish groundwater for drinking, reduce soil loss and cleanse the environment of pollutants; helping to improve air quality, for example.

In terms of our mental and physical health, our woodlands provide areas for recreation and this natural setting is also shown to improve our emotional resilience and relieve stress. Trees can also provide a cooling effect of 1-2°C in urban areas, so are essential to our health in heat-waves. So, trees near people are essential and can save money in terms of health service costs.

Woodlands in Kent, and especially plantations, are generally undermanaged for biodiversity since the demise of large native animals, which once ensured well-structured woods. Economic activity such as traditional rotational coppicing can replicate the actions of these long-gone large mammals and bring benefits for wildlife, while also creating beautiful spaces perfect for recreational activities. Kentish coppice products provide an important resource for fencing materials and wood fuel, alternatives to more polluting fossil fuels. Re-wilding initiatives are also seeking to return key-stone species such as Eurasian beaver and wild horses into Kentish woodlands.

Local Authorities, Local Nature Partnerships and Local Enterprise Partnerships are all now recognising the wider importance of our trees and woodland and are including this in strategies for the county including the draft *Kent Biodiversity Strategy* and the draft *Strategic Kent Tree Action Plan*.

As Sophie has shown however, trees need help from us all and this newly planted tree will need much tender loving care if it is to prosper in an urban setting. Indeed, Kent Highways, Transportation and Waste colleagues are keen for local residents and communities to similarly adopt their local street trees, to ensure that they flourish as the climate warms – so that they continue to lift our spirits with their natural beauty and contribute all their vital environmental and health benefits.

For Sophie's small-leaved lime, my team – the Resilience and Emergency Planning Service has agreed to adopt the tree and ensure that it is watered daily, and its welfare is monitored. We are tasked with ensuring Kent's resilience to all threats, including the unfolding climate and ecological crisis, so we are pleased to perform this guardian role – but you can do the same!

*Tony Harwood, Resilience and Emergency Planning Service, Kent County Council*

# **OATEN HILL & SOUTH CANTERBURY ASSOCIATION**

## **AGM 2019**

Friday 18<sup>th</sup> October, Kendall Hall, St Mary Bredin, 59 Nunnery Fields CT1 3JN  
doors open from 7.00 pm; refreshments and informal discussion

### **AGENDA**

*7.30 – 8.00 pm, open to all residents and guests*

#### ***Presentation by Susan Acott***

Susan Acott is the Chief Executive, East Kent Hospitals University NHS Foundation Trust. A graduate of Birmingham University, she has long-standing experience in the NHS, having worked in a variety of posts in Manchester, Merseyside, York and London. [If Susan Acott is unable to attend, item 14 on the Agenda will be taken here.]

*8.15 pm, OHSCA Members only:*

1. Apologies for absence
2. Minutes of AGM held 19<sup>th</sup> October 2018 (see pages 7–8, this Newsletter)
3. Matters arising
4. Annual Report from the Acting Chair (to include work of subcommittees)
5. Annual report from Hon Treasurer
6. Approval of certified accounts for the financial year ending 31 August
7. Annual report from Membership Secretary
8. Receive annual reports from SIGs and subcommittees (History, Green, SEA, OHC)
9. Subscription rate (the Committee is not recommending any change for coming year)
10. Proposal for revisions to the Constitution (see page 8, this newsletter)
11. Nominations for Officers and Committee for 2019–2020 (see page 6, this Newsletter)
12. Elections for:
  - o Chair
  - o Vice Chair(s)
  - o Hon Treasurer
  - o Hon Secretary
  - o Membership Secretary
  - o Committee Members
  - o Appointment of suitably qualified person to certify the accounts at the end of the ensuing year (this person shall not be a member of the outgoing and/or incoming Committee)
13. Other business (which must be notified in writing in advance – see page 6)
14. ***Open Space*** – a presentation by **Tim Carlyle and Tim Chancellor**
15. Vote of thanks and end of formal meeting (approx. 9.15 pm)

# **OATEN HILL & SOUTH CANTERBURY ASSOCIATION**

## **Officers and Committee Nomination form for 2020**

For the Committee, Nominees, Proposers and Seconders must be paid-up Members of OHSCA. Nomination forms should be received not later than Friday 11<sup>th</sup> October. Signed nomination forms need to be posted or delivered by hand to the OHSCA Secretary, 13 Wells Avenue, Canterbury CT13YB. One copy of the form is required for each nomination. If you need copies, please print from the website ([www.ohsca.org](http://www.ohsca.org)), photocopy this page, or contact the Hon Secretary by telephone or email (07713 025245; [secretary@ohsca.org](mailto:secretary@ohsca.org)). If you are unable to deliver your nomination before 11<sup>th</sup> October, please advise the Hon Secretary of your intentions as soon as possible. If you have difficulty in finding a seconder for a Nomination please contact any member of the Committee via the Secretary, or direct if you know them personally.

A call is also made here for items to be included on the Agenda under 11: Other Business. Such items must be duly proposed and seconded (with addresses), and signed. This can include Resolutions. Proposals for Items to be included on the Agenda should be sent on paper to the Hon Secretary, and must also be received by 11<sup>th</sup> October at the latest.

### **OHSCA: ELECTION OF OFFICERS AND COMMITTEE 2019-2020**

#### **NOMINATION FORM**

NOMINEE (caps)

.....

Nominated for (please circle one):    Chair  
    Vice Chair  
    Hon. Treasurer  
    Hon. Secretary  
    Membership Secretary  
    Committee Member

PROPOSED by (caps)

.....

Signature

.....

SECONDED by (caps)

.....

Signature

.....

## MINUTES OF 2<sup>nd</sup> OHSCA AGM

Friday 19<sup>th</sup> October 2018

Kendall Hall, St Mary Bredin, 59 Nunnery Fields

Present: a list of those in attendance is filed with these Minutes.

Dick Vane-Wright, OHSCA Chair, welcomed everyone to the AGM.

### 1. Apologies

Caroline and Roger Thornington, Minette and Tony Smith, Gill Gower, Michael Steed, Sarah Whittall, Michael Wood, Tim Chancellor, Alison Culverwell, Sarah Perkins.

### 2. Minutes of AGM held September 29<sup>th</sup> September 2017

These were agreed without amendment, proposed by Tim Carlyle and seconded by Bert Leslie, and signed off by the Chair.

### 3. Matters Arising

There were no Matters Arising from the Minutes.

### 4. Annual Report from the Chair (full copy filed with these Minutes)

Dick Vane-Wright thanked Committee members for their work over the year. He also thanked Keith Rishworth who had been dealing single-handed with Planning before his departure from the Committee, Cathy Sales for her work on the Lansdown Pathway and footbridge and DK's involvement with ACRA.

The Planning function is now shared by five committee members TC, PE, HL, SSc and CT. Chris Tucker has championed the protection of The St Mary Bredin School and Mound and David Kemsley the conservation of The Hoystings. CT has organised OHSCA's first online survey about McCarthy and Stone's application to build 50 retirement flats on land occupied by 35-41 NDR. 51% were opposed to the scheme. Mountfield Park also remains a key planning issue.

The new OHSCA Healthwatch sub-committee (DK, PE, DL, AC and Karen Thomsett) have produced an excellent Emergency Health Care leaflet and are now working on a champion document on the mental health service.

### 5. Annual Report from the Treasurer (copy of Accounts filed with these Minutes)

Jeff Derham presented the 2017-2018 accounts which showed a surplus of £1,390. The income and expenditure statement and the balance sheet had been kindly certified by Hilary Adams. Thanks to successful SEA activities and other OHSCA events, the Association is in a very healthy financial position.

### 6. Approval of certified Accounts for the financial year ending 31<sup>st</sup> August 2018

The Accounts were certified by Hilary Adams, signed

### 7. Annual Report from Membership Secretary

Sophie Scott announced that there were now 462 OHSCA members living at 309 addresses. Some GDPR consents were still outstanding and were being chased.

### 8. Annual Reports from Special Interest Groups

Green Team – SSc reported that two trees had been planted in St Augustine's Road, one *kohleuteria* Pride of India in front of the Chaucer Hotel in memory of Doris Hughes and one *Ginkgo* outside the Police Station. It is hoped to plant a Judas tree outside Premier Inn this winter. The Green Team gardens were awarded "thriving" category in the South East in Bloom competition. SSc gave particular thanks to Deidre Hawkes and Dave Goddard.

Local History Group (Chair's full report filed with these Minutes) – Mike Brain told the meeting that the Group's new publication on Oaten Hill should be published by Christmas. The Group hoped the SMB School site could be used for the benefit of the wider community and they were still working on the storyboard for Holman's Car Park.

GIG and SEA – Hazel Vane-Wright reported a busy year of events including walks, plants swaps, visits to gardens and DK's allotment, Spring Party, tapas and teas. The next big event will be the Christmas Fayre on 8<sup>th</sup> December for which help was needed to set up the venue.

### 9. Recommendation regarding annual subscription

Jeff Derham recommended that the annual subscription remain at £5 per household for 2018-2019. This was moved by Marion Bell and seconded by Pat Edwards.

### 10. Proposal for revisions to the Constitution

Amendments to the Constitution and Standing Orders (which had been widely publicised in the recent newsletter) were proposed by TC and seconded by Brian Munday, DL, DK and DVW and voted for unanimously. DVW thank Denis Linfoot for all the work he had done in preparing the revised Constitution.

### 11. Nominations for Officers and Committee 2018-2019

The nomination papers for 13 applicants are filed with these Minutes.

### 12. Elections for Committee members 2017-2018

The following were unanimously block elected to form the next OHSCA Committee proposed by SSc and seconded by DL.

Chair –

Vice Chair – Tim Carlyle

Hon Treasurer – Jeff Derham

Hon Secretary – Marion Bell

Membership Secretary – Sophie Scott

Committee Members: Tim Chancellor, Alison Culverwell, Pat Edwards, David Kemsley, Helly Langley, Denis Linfoot, Jenny MacDonald, Chris Tucker, Graham Wood.

Hilary Adams was nominated as Auditor for 2019.

The Committee will operate a rotating Chair starting with Tim Carlyle, vice Chair. Harry MacDonald asked about the continuity between meetings in the absence of a Chair.

Should anyone wish to sit in on a meeting, they would be very welcome.

ctd next page

### 13 Other Business

There was no AOB

### 14. End of formal meeting.

David Kemsley gave thanks on behalf of the Committee to departing Chair Dick Vane-Wright and presented him with gifts.

After a short break and refreshments, Dr Sheila Sweetinburgh gave an illustrated talk on **“People and Places in Late Medieval Ridington Ward”** in which she introduced some of the fascinating characters who lived in this rather poor part of the City, through her extensive research into medieval wills and documents. The Meeting closed at 9.45pm.

---



The Lord Mayor, Cllr Terry Westgate, presenting the Hayes Award for 2019 to Dr David Potter, 3<sup>rd</sup> Sept. (see page 3)

## PROPOSED CHANGES TO THE CONSTITUTION Section 7 – Special Interest Groups

1) Add new line at top of introduction:

The Local History Group (LHG) is an independent group, similar to other SIGs in general terms, but not governed in the same way.

2) At section 7.3, add:

With the exception of the LHG, . . . to read –  
With the exception of the LHG, the Group may not publish anything or make any public pronouncements without prior agreement of the Association’s Committee;

3) At end of section 7.5, add (run on):

The LHG, which is an independent group within OHSCA, is an exception to the provisions of this section – its financial arrangements, governing committee and activities are not controlled by OHSCA main committee.

Then continue as existing.

---

### OHSCA COMMITTEE 2018–2019

**Tim Carlyle**  
**Marion Bell**

Vice-Chair/Planning Rep: vicechairtc@ohsca.org  
Hon. Secretary/Main OHSCA Contact: 13 Wells Avenue, CT1 3YB Tel: 07713 025245:  
secretary@ohsca.org

**Jeff Derham**  
**Sophie Scott**

Hon Treasurer: treasurer@ohsca.org  
Membership Secretary/Green Team: 27 Ersham Road CT1 3AR Tel: 01227 456285  
sophie01@btinternet.com

**Tim Chancellor**  
**Alison Culverwell**  
**Pat Edwards**  
**David Kemsley**  
**Helly Langley**  
**Denis Linfoot**  
**Chris Tucker**  
**Graham Wood**

Committee member: website@ohsca.org  
Committee member/Social Events and Activities rep: social@ohsca.org  
Committee member  
ACRA /SCA Rep./Press Liaison: press@ohsca.org  
Committee member  
Committee member  
Committee member/Planning Bulletins: info@ohsca.org  
Committee member/Local History Group rep. For information about OHSCA Local History Publications, telephone 01227 472932 or see our publications webpage

Newsletter distribution  
Chair Local History Group  
Tree Champion  
Events bulletins  
Newsletter editors (this issue)

*Deirdre Hawkes*  
*Mike Brain*: history@ohsca.org  
trees@ohsca.org [*Gill Gower* resigned May 2019]  
*Karen Thomsett*  
*Greta Cotterell* and *Dick Vane-Wright*

If you are uncertain who to contact please direct your enquiry to the Honorary Secretary e.g. for OHC, the OHSCA Health Care sub-committee.

Note: ACRA = Alliance of pan-Canterbury Residents' Associations; SCA = Southern Canterbury Alliance.

#### Some useful contacts

- For problems with student neighbours contact University of Kent student community liaison officer: 01227 816156; communityliaison@kent.ac.uk; <https://www.kent.ac.uk/studentservices/community/index.html>
- If you are concerned about security or have an urgent query and need to talk to the Canterbury City Council ‘Out of Hours’ team, their number is 01227 781 879. This redirects to CCC Control Room staff on duty 24/7.
- To report illegal parking:  
[https://www.canterbury.gov.uk/info/20062/parking\\_fines\\_and\\_restrictions/43/report\\_illegal\\_parking](https://www.canterbury.gov.uk/info/20062/parking_fines_and_restrictions/43/report_illegal_parking)
- To report graffiti (with possibility of removal depending on circumstances)  
[https://www.canterbury.gov.uk/info/20044/vandalism\\_and\\_graffiti/55/report\\_graffiti](https://www.canterbury.gov.uk/info/20044/vandalism_and_graffiti/55/report_graffiti)